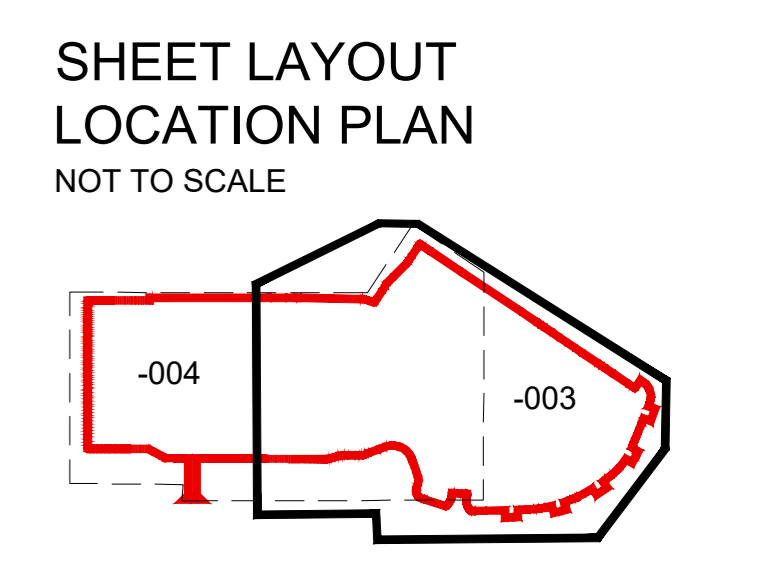


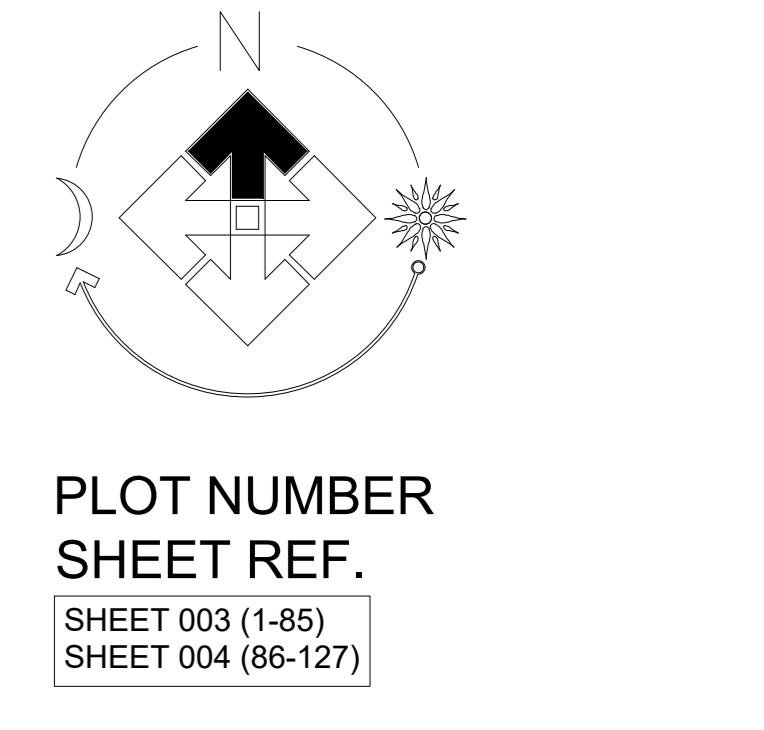


- LEGEND**
- EXISTING TREES/HEDGES  
With Root Protection Area  
To be retained
  - PROPOSED TREES  
Sm - Semimature  
Ets - Extra Heavy Standard  
See Schedule
  - ORNAMENTAL HEDGE  
See Schedule
  - PROPOSED PLANTING  
Shrubs/Herbaceous/Grasses  
See Schedule
  - TURF  
with area (m<sup>2</sup>)
  - AMENITY GRASS AREAS  
Wear Tolerant Turfgrass Mixture  
Emeragade EG22 sown at 25g/m<sup>2</sup>  
Keep mown short to 40mm

**DRAWING NOTES**  
 All tree and shrub locations and species must be taken into consideration by the project Structural Engineer to ensure that foundation design accords with the specifications set out in Chapter 4 of the NHBC Standards.  
 The landscape Contractor must ensure that plant material is planted in the locations shown and with NO SUBSTITUTIONS made without consulting the Group Landscape Design Department. It is the Landscape Contractor's responsibility to ensure that all underground services have been located and identified in advance of tree pit excavation so that no services are damaged or compromised by tree planting. Any changes to tree positions, species or specifications must be approved by the Group Landscape Design Department. Underground service strips are to be kept free of all plant material.  
 Contractors must comply with all Health and Safety regulations and be aware of project/site specific information including referring to the information set out in the CDM drawings.



- CDM LEGEND**
- | Symbol | Brief description of risk                               |
|--------|---|
|        | Caution overhead/underground services                   |
|        | Sever assessment  |
|        | Trees have protection order in place, guarding required |
- NOTES:**  
 Please contribute to ensure all health and safety procedures are being correctly followed in relation to all temporary works.



**FOR SPECIFICATION,**  
**PLANTING DETAILS &**  
**SCHEDULE SEE DRAWING**  
**SO137-LS-005**

Revision	Date
1	22/07/21

Landscaping updated to the latest layout (G).

JOB: Arborfield, Parcel V1S  
 TITLE: Site Landscaping  
 Scale: 1:250 @A0  
 Date: July 2021  
 Drawn: LP  
 Checked: FmJ

**BLOOR HOMES**  
 J S BLOOR (SERVICES) LIMITED  
 ASHBY ROAD, MEASHAM, SWALINACOTE,  
 DERBYSHIRE DE12 2JF  
 TELEPHONE 01530 270100 FACSIMILE 01530 272006

Drawing No: **SO137-LS-003a**

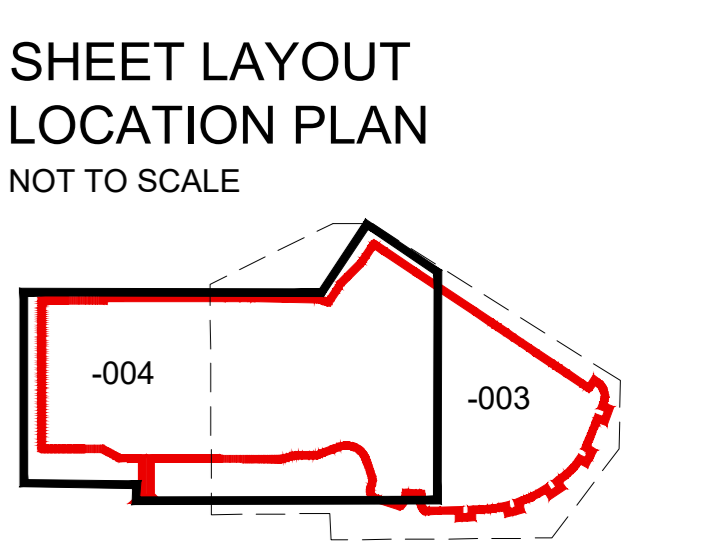
# ARBORFIELD

# ARBORFIELD

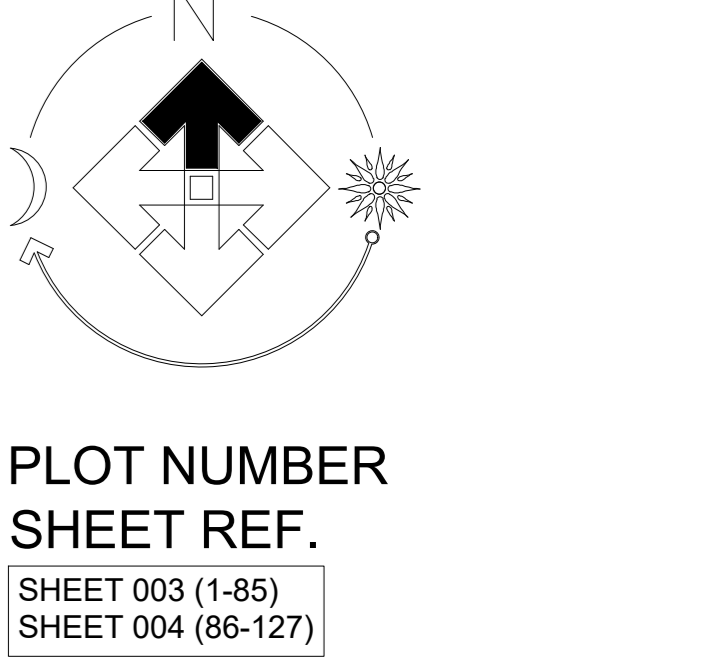
- ### LEGEND
- EXISTING TREES/HEDGES With Root Protection Area To be retained
  - PROPOSED TREES Sm - Semi-mature Ehs - Extra Heavy Standard See Schedule
  - ORNAMENTAL HEDGE See Schedule
  - PROPOSED PLANTING Shrubs/Herbaceous/Grasses See Schedule
  - TURF with area (m<sup>2</sup>)
  - AMENITY GRASS AREAS Wear Tolerant Turfgrass Mixture Emorgate EG22 sown at 25g/m<sup>2</sup> kept mown short to 40mm

### DRAWING NOTES

All tree and shrub locations and species must be taken into consideration by the project Structural Engineer to ensure that foundation design accords with the specifications set out in Chapter 4 of the NHBC Standards. The Landscape Contractor must ensure that plant material is planted in the locations shown and with NO SUBSTITUTIONS made without consulting the Group Landscape Design Department. It is the Landscape Contractor's responsibility to ensure that all underground services have been located and identified in advance of tree pit excavation so that no services are damaged or compromised by tree planting. Any changes to tree positions, species or specifications must be approved by the Group Landscape Design Department. Underground service strips are to be kept free of all plant material. Contractors must comply with all Health and Safety regulations and be aware of project/site specific information including referring to the information set out in the CDM drawings.



- ### CDM LEGEND
- Caution overhead / underground services
  - Sewer easement
  - Trees have protection order in place, guarding required
- NOTES:  
 Please ensure contractor to ensure all health and safety procedures are being correctly followed in relation to all temporary works.



FOR SPECIFICATION, PLANTING DETAILS & SCHEDULE SEE DRAWING SO137-LS-005

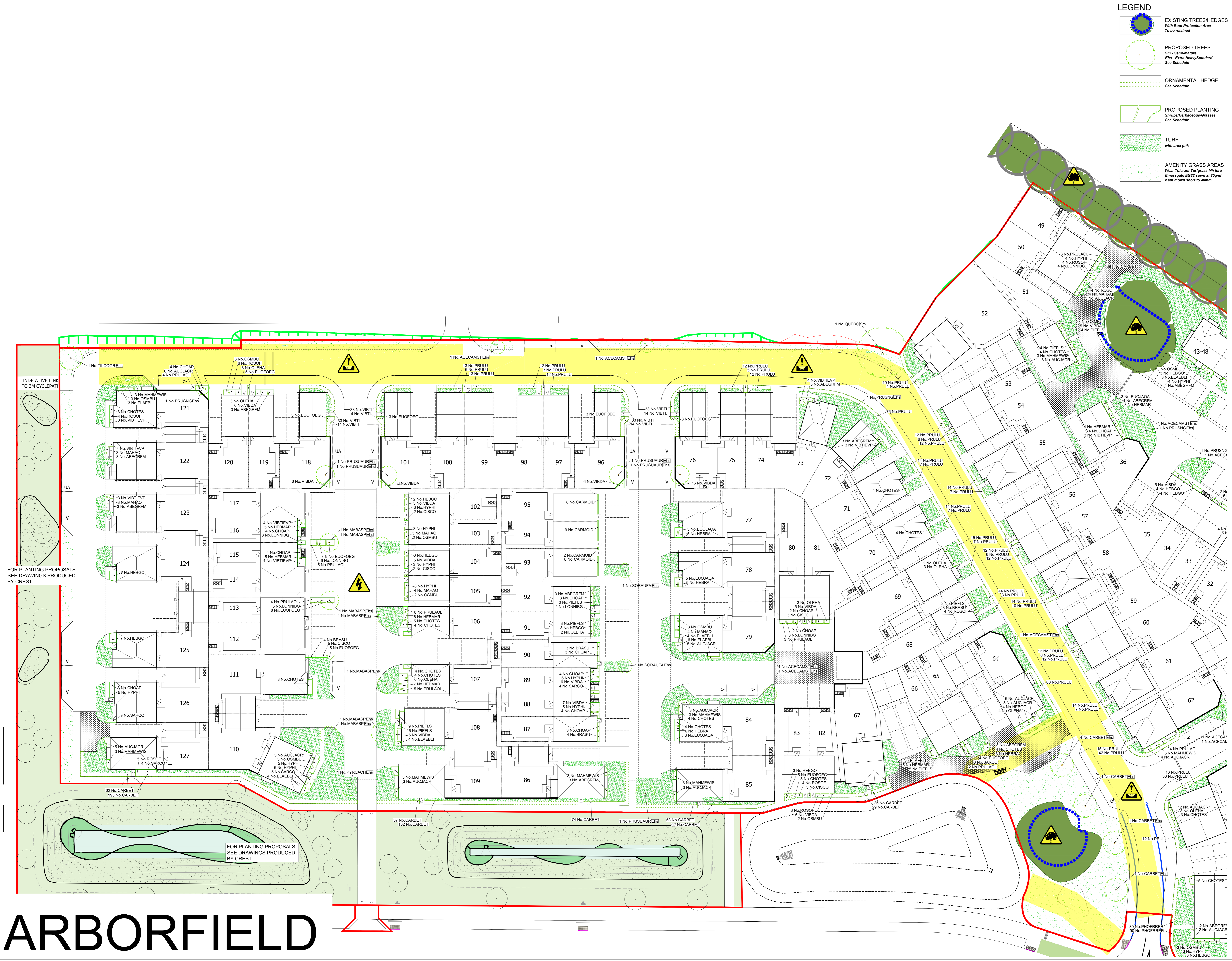
Revision	Date
1	22/07/21
Landscape updated to the latest layout (G).	

Job:	Arborfield, Parcel V1S
Title:	Site Landscaping
Scale:	1:250 @A0
Drawn:	LP
Date:	July 2021
Checked:	FmJ

THIS DRAWING AND THE BUILDING WORKS DEFINED ARE THE COPYRIGHT OF BLOOR HOMES (SERVICES) LIMITED. NO PART OF THIS DRAWING OR ANY INFORMATION CONTAINED HEREIN IS TO BE REPRODUCED OR TRANSMITTED IN ANY FORM OR BY ANY MEANS, ELECTRONIC OR MECHANICAL, WITHOUT THE WRITTEN PERMISSION OF BLOOR HOMES (SERVICES) LIMITED. LIABILITY WILL BE ACCEPTED FOR MEMBERSHIP MADE BY OTHER PERSONS.

J S BLOOR (SERVICES) LIMITED  
 ASHBY ROAD, MEASHAM, SWALINCHOTE,  
 GERRYSHIRE DE12 2JF  
 TELEPHONE 01530 270100 FACSIMILE 01530 272006

Drawing No. **SO137-LS-004a**



INDICATIVE LINK TO 3M CYCLEPATH

FOR PLANTING PROPOSALS SEE DRAWINGS PRODUCED BY CREST

FOR PLANTING PROPOSALS SEE DRAWINGS PRODUCED BY CREST